

# CIRCULATING PUMP 循環泵

循環泵使用以及  
維修手冊

*The Manual for Operating  
and Maintenance*



**GPD** 系列 單向管道泵

**GPD series Single-phase pipeline  
screened electric pump**



# ***GPD series Single-phase pipeline screened electric pump***

## **GPD 系列 單向管道泵**

### **Content**

- 1. Conditions of operation* .....▶
- 2. Points for instalation* .....▶▶
- 3. Maintenace and repair* .....▶▶

### **目錄**

- 1. 操作圖示 .....▶
- 2. 安裝要點 .....▶▶
- 3. 維修事項 .....▶▶

***The GPD type***  
***Typ GPD***

### 1. Conditions of operation

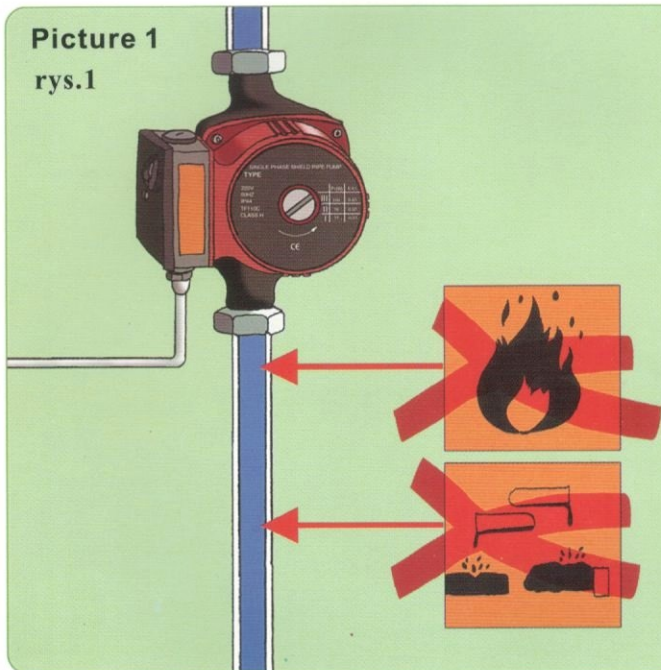
*Bearing of pump is lubricated with water, running without water can not exceed 10 seconds. Shown as Picture 1.*

#### 1、操作圖示

水泵通過水做潤滑,乾運轉不能超過10秒鐘.如圖1

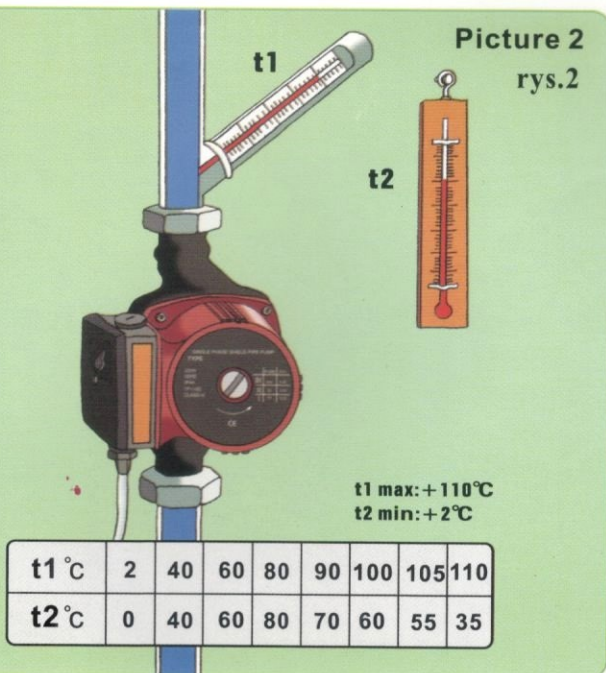
**Picture 1**

**rys.1**



- *The temperature of environment must be lower than that of media. Shown as Picture 2.*

- 環境溫度不得超過圖示中的溫度。



## 2.Points for installation

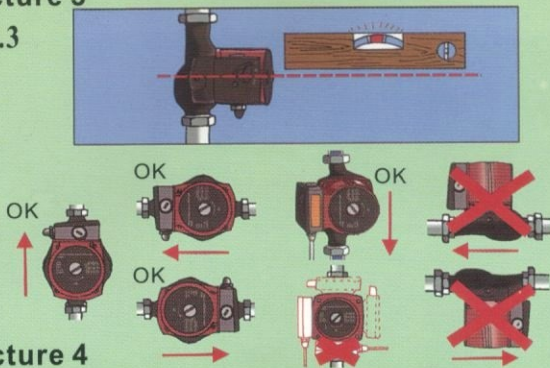
- Pump must be horizontally installed. Shown as Picture 3.
- Pump must be installed according to following procedures shown as Picture 4.

### 2.安裝要點

- 水泵如圖3所示，必須水平安裝。
- 水泵必須按照圖4中的步驟安裝。

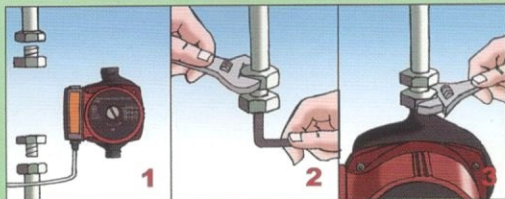
Picture 3

rys.3

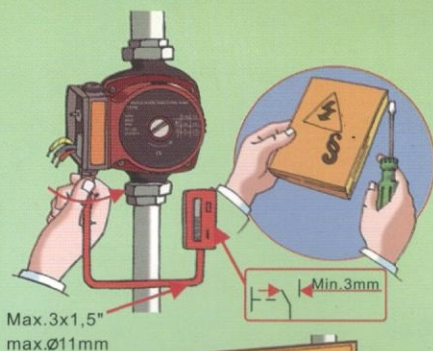


Picture 4

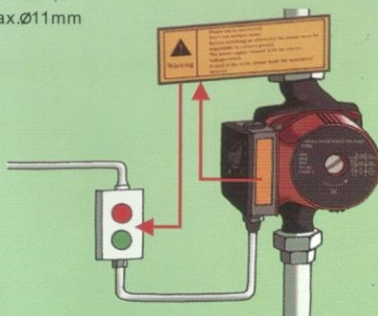
rys.4



- Beware to use electricity, invite technician to install the pump according to electricity using regulation if neccessary. Shown as Picture 5.
- Please read the warnings carefully before installation. Shown as Picture 6.
- 如圖5所示，安裝的時候小心觸電，請按照電工規範接電。
- 請認真閱讀安裝要素。見圖6。



**Picture 5**  
rys.5



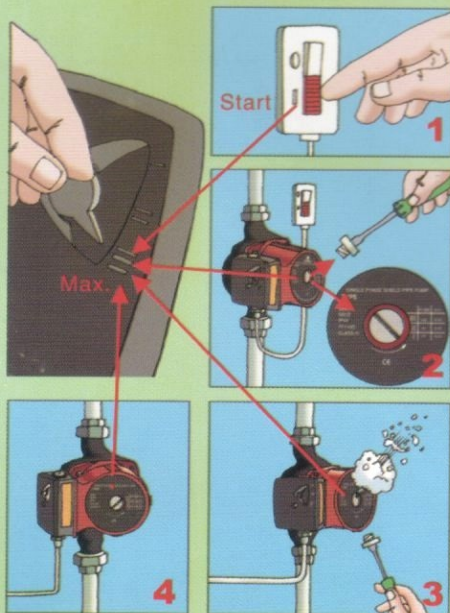
**Picture 6**  
rys.6



- After installed, pump must be deflated before working for the first time. Shown as Picture 7.

- 安裝之後，第一次使用水泵必須排氣。見圖7

**Picture 7**  
rys.7



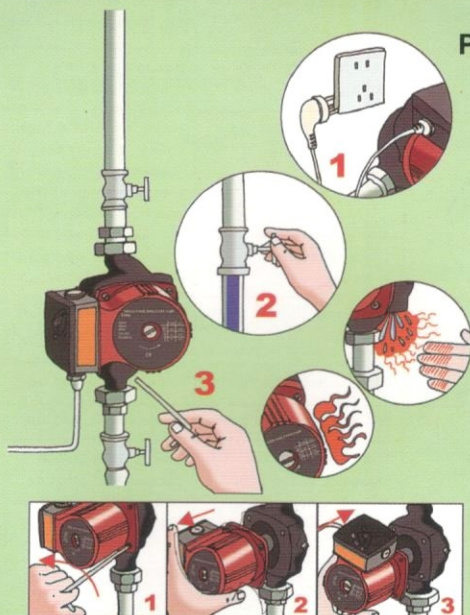


### 3. Maintenance and repair

*Attention: if damaged, the power cord must be exchanged by factory or askin technician in order to avoid danger. The maintenance procedures are shown in Picture 8.*

#### 3. 維修

注意:如果出現問題,首先要斷電,或者資訊技術人員,防止出現意外。  
維修間圖8.



Picture 8  
rys.8

**Common troubles diagnostic list.**

Common troubles	Causes of troubles	The measures of eliminating troubles
Pump can't be started up	Power supply is not well connected.	Check the fuse or the connection of electricity that possibly loose.
	Electric capacitor is damaged.	Exchange a new electric capacitor.
	Bearing blocked the pump's running.	Make it run in a high speed in short time or loosen the rotor with a screwdriver at the end of shaft.
	There is impurity in pump.	Disconnect pump to clean.
There is noise in the system.	The pump flow is made too high.	Adapt to a lower speed.
	There is gas in the pump.	Release the gas up.
There is noise in the pump.	There is gas in the pump.	Release the gas up.
	The inlet hydraulic pressure is too low.	Increase hydraulic pressure of inlet or check gas volume in the enlarged slot.

## ● 一般問題參考

問題	原因	解決辦法
水泵無法啟動	電源接觸不良	確認電源線是否插好
	電容器損壞	更換電容
	水泵裡面有雜質	清洗水泵，去除雜質
系統噪音響	水泵水流過大	切換到低速
	水泵裡面有空氣	排除裡面的空氣
水泵噪音響	水泵裡面有空氣	排除裡面的空氣
	進水口液體壓力過低	增加進水口液體壓力 或者確認水泵裡面的 空氣

***PUMP***

